

°bloc NEW

The first linear lighting system available in a wide variety of high quality materials to offer a solution to your unique requirements.

Interchangeable °bloc units clip onto a surface mounted track.

Design by etre moderne



NEW



°BLOC.SPOT walnut & brass brushed & °BLOC walnut & white carrara
House, Belgium - architect Pascal François - photograph by Thomas De Bruyne (cafeine.be)



Stone workshop

Wood workshop



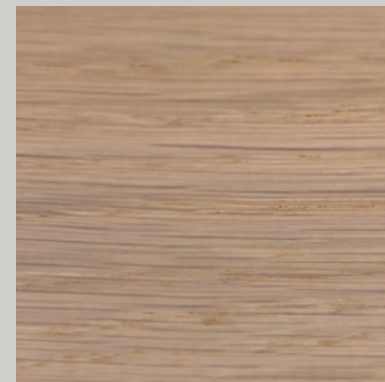
Polishing brass

Milling wood

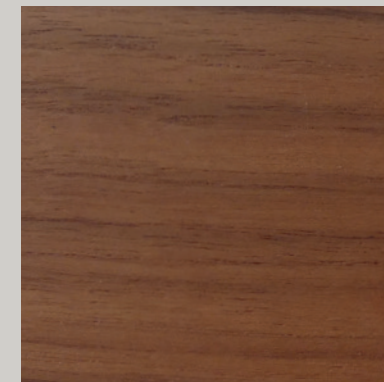
**We use natural materials,
selected with the greatest care.**

**They are being processed in local workshops
by professional craftsmen.**

scale 1/1



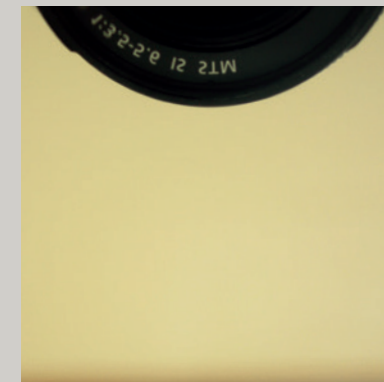
European oak (FSC 100%)



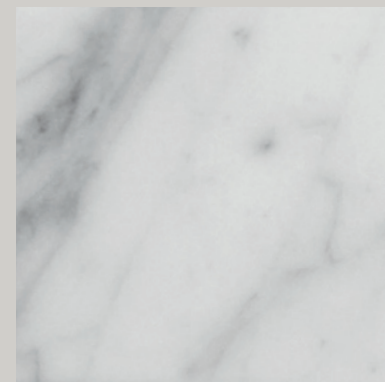
American walnut (FSC 100%)



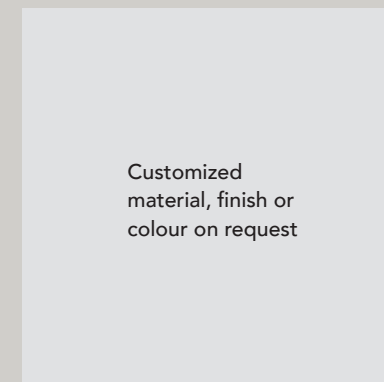
Brass brushed



Brass polished

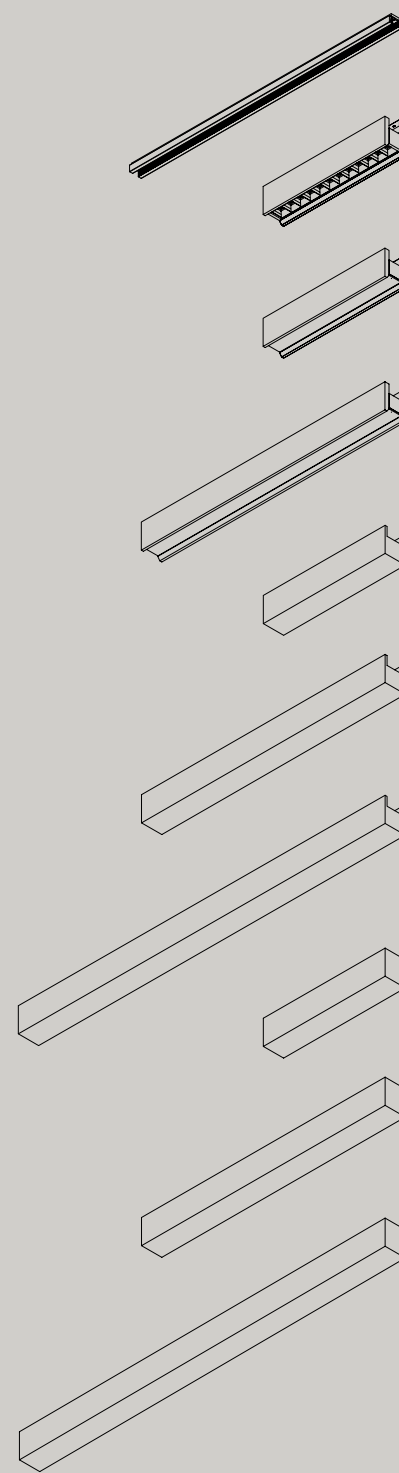


Italian Bianco Carrara "C"



Customized
material, finish or
colour on request

Differences in colors and patterns may occur since these are natural materials.



track

bloc spot
300 mm
20° or 40°, both with a black anti-glare louvre

bloc stripe
300 mm
frosted ice or microprism diffuser

bloc stripe
600 mm
frosted ice or microprism diffuser

bloc
300 mm

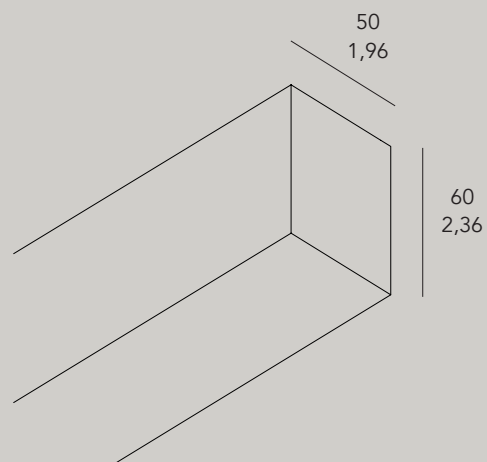
bloc
600 mm

bloc
900 mm

bloc end
300 mm

bloc end or bloc with integrated driver
600 mm

bloc end
900 mm



BLOC.SPOT.300.L.M.B Bloc led **spot** 24Vdc

Led	WW	2700K 13W		
	WW2	3000K 13W		
	NW2	4000K 13W		
Length*	300	mm		
Material	BRA-BR	brass brushed, clear matt varnished		
	BRA-HP	brass high polished, clear varnished		
	OAK	european oak massive, clear matt varnished		
	WAL	american walnut massive, clear matt varnished		
	CAR	italian white carrara C, matt sweetened		
	WHI	aluminium, white coated		
	BLA	aluminium, black coated		
Beam	20°	spot 20°	WW	1000 lm / 3200 cd
		with black anti-glare louvre	WW2	1036 lm / 3329 cd
			NW2	1120 lm / 3500 cd
	40°	spot 40°	WW	700 lm / 365 cd
		with black anti-glare louvre	WW2	730 lm / 380 cd
			NW2	785 lm / 410 cd

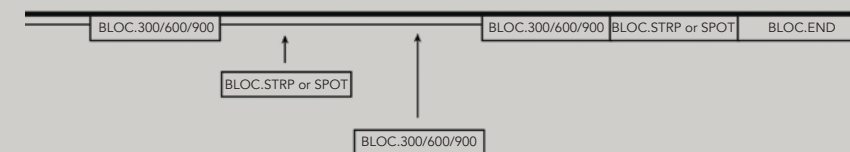
BLOC.STRP.L.L.M.D Bloc led **stripe** 24Vdc

Led	WW	2700K		
	WW2	3000K		
	NW2	4000K		
Length*	300	mm	13W	
	600	mm	26W	
Material	BRA-BR	brass brushed, clear matt varnished		
	BRA-HP	brass high polished, clear varnished		
	OAK	european oak massive, clear matt varnished		
	WAL	american walnut massive, clear matt varnished		
	CAR	italian white carrara C, matt sweetened		
	WHI	aluminium, white coated		
	BLA	aluminium, black coated		
Diffuser	FI	frosted ice diffuser	WW	700 lm / 365 cd
		(wide angle)	WW2	730 lm / 380 cd
			NW2	785 lm / 410 cd
	MP	microprism diffuser	WW	700 lm / 365 cd
		(wide angle & anti-glare)	WW2	730 lm / 380 cd
			NW2	785 lm / 410 cd



BLOC.L.M.V		Bloc without light
Length	300	mm
	600	mm
	900	mm
	custom	on request (possible lengths depend on the kind of material)
Material	BRA-BR	brass brushed, clear matt varnished
	BRA-HP	brass high polished, clear varnished
	OAK	european oak massive, clear matt varnished
	WAL	american walnut massive, clear matt varnished
	CAR	italian white carrara C, matt sweetened
	WHI	aluminium, white coated
	BLA	aluminium, black coated
Version	END	bloc closed at one side (at the beginning or the end of the track)

BLOC.LD.M.LD		Bloc with an integrated led driver 600 mm
Material	BRA-BR	brass brushed, clear matt varnished
	BRA-HP	brass high polished, clear varnished
	OAK	european oak massive, clear matt varnished
	WAL	american walnut massive, clear matt varnished
	CAR	italian white carrara C, matt sweetened
	WHI	aluminium, white coated
	BLA	aluminium, black coated
Led Driver	US	100W input 110-240 Vdc DALI supported
	EU	100W input 220-240 Vdc DALI supported
	24V	remote, see p. 76

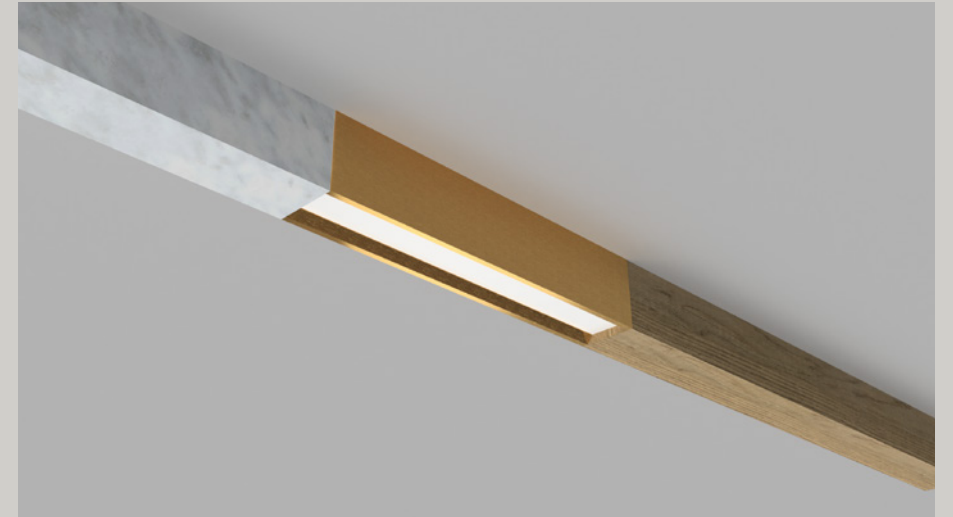


- BLOC.STRP or BLOC.SPOT don't fit to each other;
these must be always separated by a BLOC (without led)

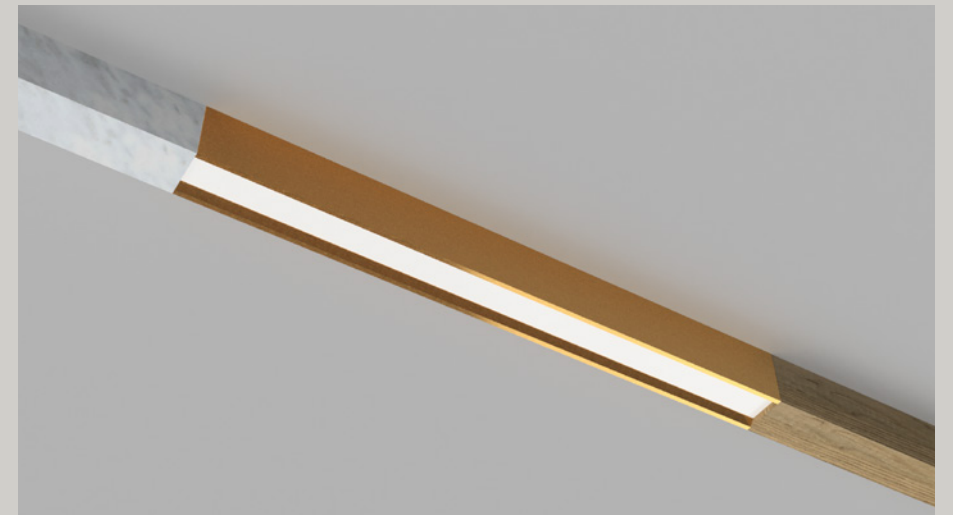
- BLOC.END isn't available with led.



°BLOC.STRIPE brass brushed & °BLOC walnut
 House Aalst, Belgium - architect Pascal François - photograph by Jeroen Verrecht



BLOC.STRP.300 with frosted ice diffuser



BLOC.STRP.600, with frosted ice diffuser



BLOC.SPOT.300, 20° or 40°, with black anti-glare louvre